

Model 27 Flow Switch

The Model 27 Flow Switch is designed to produce a signal if the flow of material at any critical point is interrupted. This signal can then be used to correct the difficulty and/or warn the operator.

Several switches can be used, each one placed at critical points along the conveying system. A continuous flow of material past the switch holds the paddle-shaft-counterweight assembly out of the actuated position. If flow stops, the paddle pivots and actuates the switch. When this occurs a signal is generated to start or stop supporting machinery, or to activate visual or audible alarm systems.

Model 27 is also fully adjustable. The paddle and counterweight assemblies can be positioned at various points along the shaft and rotated to any angular position. The shaft itself will adjust laterally, and the actuating cams can be rotated so that switch actuation will occur at predetermined points.

This versatile switch can be mounted on all types of conveyors and feeders; in discharge openings of bins, bunkers, or hoppers; in angled and vertical chutes; or in discharge chutes of any configuration. It is available with either a aluminum housing or optional cast iron, and in standard or explosion proof models. The paddle and shaft are both of stainless steel.

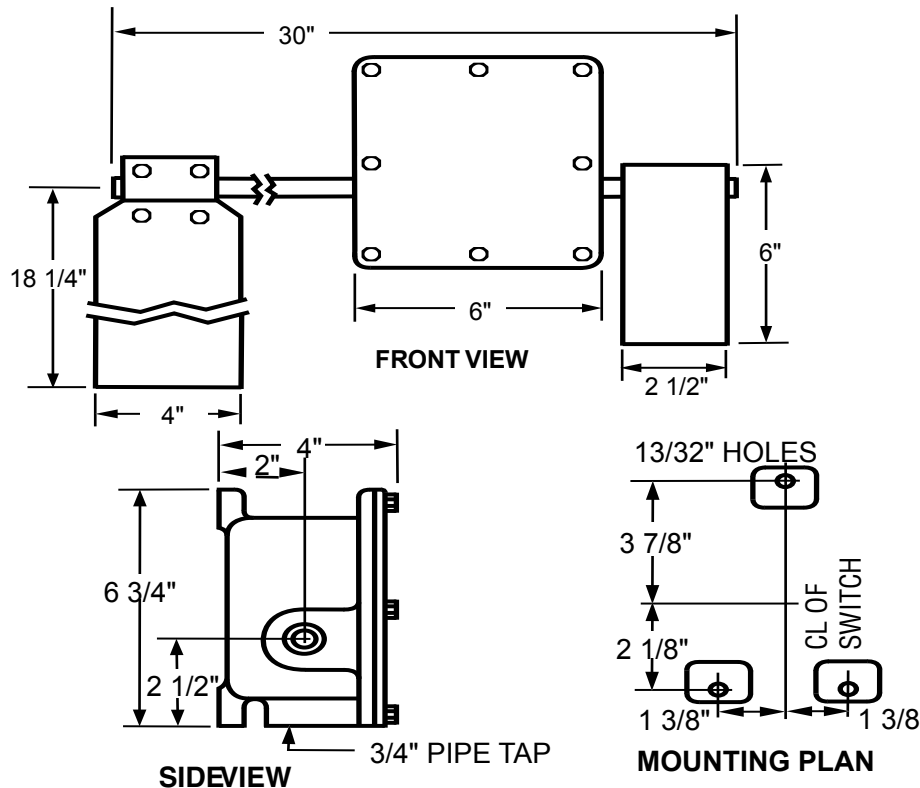
TECHNICAL INFORMATION:

- **HOUSING:** Aluminum or Epoxy coated (optional)
- **CONDUIT OPENING:** One 3/4"
- **SHAFT AND PADDLE:** Stainless Steel
- **SWITCH SPECIFICATIONS:** 20 amp. @ 125, 250 or 480 VAC - 10 amp @ 125 VAC "L" - 1 hp @ 125 VAC, 2 hp @ 250 VAC - 1/2 amp @ 125 VDC, 1/4 amp @ 250 VDC.
- **ENCLOSURES:** 27-1 and 27-2 - NEMA 3S, 4,4X & 12 dust and weather-tight - 27-1X and 27-2X - NEMA 7, class I groups C & D and NEMA 9 class II groups E, F, and G. Explosion proof.

NOTE: Switches may be wired for single throw operation, either normally open or normally closed as required.

INSTALLATION INSTRUCTIONS:

1. A cam on the shaft actuates the switch. Loosening the cam (or cams on the two switch unit) and the shaft locking collars permits the shaft to be moved laterally in the casting. The paddle sensor and counterweight can be positioned anywhere on the shaft. Use the 3/32" dia. Allen wrench furnished.
2. Housing can be mounted in any position. Counterweight permits paddle operation in any position from vertical to horizontal.
3. After mounting the unit the cover should be removed to adjust the cam on the shaft to give switch actuation at the desired point. both the paddle and the counterweight may have to be loosened, rotated, and retightened on the shaft to achieve proper actuation.
4. The paddle or counterweight may be easily field altered to suit application.



ORDERING INFORMATION

Model 27-1 One sp/dt micro switch
Model 27-2 two sp/dt micro switches
 Epoxy coating option is available.

Model 27-1X Explosion proof w/one sp/dt micro switch
Model 27-2X Explosion proof w/two sp/dt micro switches

PC CONVEYOR SAFETY STOP SWITCH	SS CABLE OPERATED SAFETY STOP SWITCH
MODEL 16 BELT ALIGNMENT SWITCH	MODEL SRC SPEED RESPONSIVE SWITCH
FLOW SWITCH	BRUSH TYPE CONVEYOR BELT CLEANER
COIL SPRING CONVEYOR BELT CLEANER	RUBBER WIPER BLADE BELT CLEANER
FLOW TYPE CONVEYOR BELT CLEANER	CONVEYOR HOODS
BIN AERATORS	TERMS AND CONDITIONS